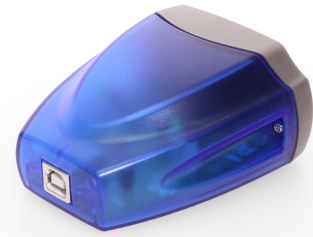




# Single Port USB 2.0 to RS-422 / RS-485 DB-9 Serial Adapter



RS-422 | RS-485 | 128 Bytes Receive | 256 Bytes Transmit | FTDI

Model No. USB-COMi



- **Expand Your Serial Capabilities:** The Mini Serial Adapter can be utilized through an existing USB Port to work with your legacy serial connections. It's great for newer technologies with no serial port connections.
- **Safe Connections:** Designed with a unique system load reduction feature, the USB to Serial Adapter also offers 15kV surge protection for connected devices.
- **Upstream:** 1 USB port, Type B Female Connector
- **Downstream:** 1 Male DB9, w/ nuts
- **RS-422 Signals:** TxD-, TxD+, RxD+, RxD-, GND, RTS-, RTS+, CTS+, CTS-
- **RS-485 Signals:** TxD-, TxD+, RxD+, RxD-, GND
- **Transmit Buffer:** 256 Bytes
- **Receive Buffer:** 128 Bytes

Interested? [LEARN MORE](#) →



[View more images here >](#)

## Questions? Speak to an engineering expert today!

Our on site engineers are ready to help you with your build.

☎ [1-727-209-1300](tel:1-727-209-1300) (Local) ✉ [expert@coolgear.com](mailto:expert@coolgear.com)



**We Speak Your Speak** - When you reach out to our support, you'll find yourself in the hands of a solution-oriented, knowledgeable expert ready to answer whatever question you throw at them. Go ahead, test us.

**We're Ready For Integration, Every Time.** - Coolgear streamlines the task of selecting charging and connectivity products. For over 20 years our rugged, off-the-shelf USB hubs and serial products are ready to go for your next project.

**Within every great machine, lives Coolgear.** - At Coolgear, we're just as passionate about building great products as you are. That's why we aim to meet or exceed your build specs every time.,

**Advanced Engineering** - Coolgear painstakingly sources high-quality components, oversees all manufacturing methods, and conducts rigorous testing to ensure all our products are industrial-grade. This means greater duty cycle, zero data loss, and longer lasting builds. We promise.,

# PRODUCT SPECIFICATIONS

Looking for product documentation?  
[View CAD Models, Data sheet and Drawings here >](#)



<b>Power</b>	<b>Adapter Power</b>	USB Bus Powered
	<b>Power Source</b>	USB Connector
	<b>External Power Required</b>	No
<b>Compliance</b>	<b>Country of Origin</b>	Taiwan
	<b>Color</b>	Blue/Gray
<b>Physical Characteristics</b>	<b>Item Dimensions (L × W × H)</b>	3.30 × 2.87 × 1.62 in.
	<b>Item Weight</b>	0.181 lbs.
	<b>Ports</b>	1 Serial Port
	<b>Material of Construction</b>	Plastic
	<b>Screw Lock Compatible</b>	Yes
	<b>RS Signals</b>	TxD-, TxD+, RxD+, RxD-, GND, TxD-, TxD+, RxD+, RxD-, GND, RTS-, RTS+, CTS+, CTS-
<b>Serial Attributes</b>	<b>Serial Standards</b>	RS422, RS485
	<b>Baud Rate</b>	921.6K bps
	<b>FIFO Receive</b>	128 bytes
	<b>FIFO Transmit</b>	256 bytes
	<b>Data Bits</b>	7, 8
	<b>Parity</b>	None, Even, Odd, Mark, Space
	<b>Stop Bits</b>	1, 2
	<b>Flow Control</b>	Hardware (RTS, CTS), XON/XOFF
	<b>OS Support</b>	Win 11, Linux, Mac OSX, Win 10, Win 7, Win 8
	<b>Operating Temperature</b>	0°C to 55°C (32°F to 131°F)
<b>Environmental</b>	<b>Storage Temperature</b>	-20 to 75°C (-4 to 167°F)
	<b>Humidity</b>	5% ~ 95% (non-condensing)
<b>Product Information</b>	<b>Warranty</b>	1 year from date of purchase
<b>Hardware</b>	<b>Chipset</b>	FTDI
	<b>LED Indicators</b>	TX / RX
<b>Performance &amp; Safety</b>	<b>ESD Protection</b>	15KV Surge Protection
	<b>Max Data Transfer Rate</b>	12Mbps
<b>Other Data</b>	<b>Connector</b>	DB9 Male w/ Nuts
	<b>Chip Model</b>	FT231XQ-R, MAX3089E
	<b>USB Interface</b>	USB 2.0
	<b>Weight</b>	.65 lbs
	<b>Dimensions</b>	4 × 4 × 2.5 in

## Ready to Buy? Let's get to work!

**Purchase order** lets set you up.

**Online with Credit card** Orders shipped same day!

\*orders placed prior to 3:30pm EST

☎ **1-888-688-2188 (Toll free)**

✉ **[sales@coolgear.com](mailto:sales@coolgear.com)**